

KEVLAR CAM CLEATS

Manufactured from a Kevlar composite and available in three sizes to accept lines up to 14mm in diameter. This advanced material offers performance advantages over carbon fibre and conventional glass-reinforced resins. K cams are very strong, lightweight and have excellent wear resistance. A progressive tooth design ensures maximum holding power on all types of line, whilst maintaining minimum wear to both cam and line.

‘K’ cam bases feature a stainless steel wear bar for prolonged life. Cams utilise stainless steel leaf springs which give a smooth but positive action. They are also stronger and have a longer life than conventional wire springs. ‘K’ cam cleats are supplied as cleat only plus separate accessories in grey, green, red or yellow where appropriate, to allow colour coordination for port, starboard etc.

Wire front fairleads

From stainless steel.

Pillar fairleads

These add ons enable the cam cleat to be engaged from a variety of angles. Cams can be fitted either way around to achieve a lead from in front or behind. Stainless steel pillars add strength and wear resistance.

Top fairleads

Incorporating stainless steel reinforcing for added strength and wear resistance.

Wedge mounts

Angled wedge mounts to suit the three sizes of ‘K’ cam cleat.

Cam top caps

Supplied in packs containing two each of red, green and yellow cam top caps.

Specifications	‘K’ Cam mini	‘K’ Cam midi	‘K’ Cam maxi
 Max line Ø	10mm	6-12mm	10-14mm
 Fastenings Ø	4mm	5mm	5mm
 Fastening centres	30mm (1 3/16")	40mm (1 9/16")	50mm (2")
Holding power	190kg	230kg	260kg
 Weight	17g	34g	50g



KEVLAR CAM CLEATS

5 70206 6 70216 7 70226 8 70236



10 70241



11 70600

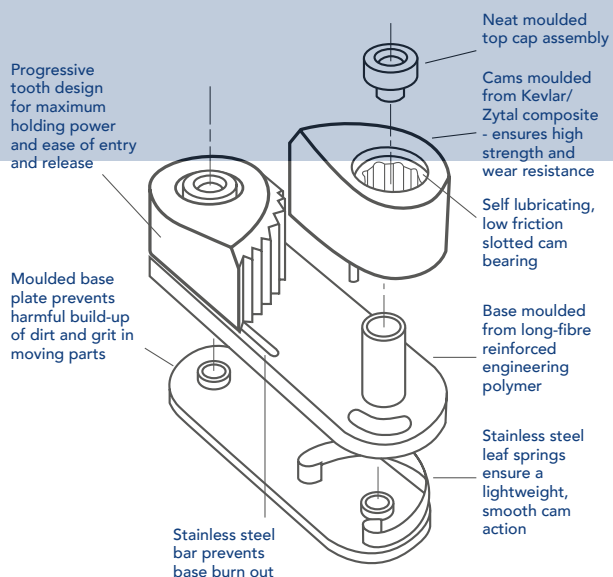


Photo No.		'K' Cam mini	'K' Cam midi	'K' Cam maxi
'K' Cam cleat only				
1	'K' Cam cleat only	70100	70200	70300
'K' Cam cleat with wire front fairlead				
2	'K' Cam cleat with wire front fairlead	70101	70201	70301
Wire front fairlead only				
3	Stainless steel wire front fairlead only	70104	70204	70304
Pillar fairlead only				
4	Pillar fairlead - grey	70105	70205	70305
Top fairlead only				
5	Top fairlead - grey	70106	70206	70306
6	Top fairlead - green	70116	70216	70316
7	Top fairlead - red	70126	70226	70326
8	Top fairlead - yellow	70136	70236	70336
Wedge mount				
9	Wedge mount	70140	70240	70340
Cam top caps				
10	Pack of top caps, 2 x red, green, yellow	70141	70241	70341

Photo No.	Part No.	Max rope Ø (mm)	Fastening centres (mm)	Fastenings Ø (mm)	Holding power (kg)	Base Ø (mm)	Weight (g)
Budget cam cleats							
11	Budget cam cleat mini	70600	10	30	4	-	-
12	Budget cam cleat midi	70601	6-12	40	5	-	-
13	Budget cam cleat maxi	70602	10-14	50	5	-	-

BULLSEYES, PAD EYES & DECK EYES

Bullseyes

A range of four bullseyes for through-deck or on-deck screw mounting. All feature a strong, moulded plastic eye, reinforced with a stainless steel bar. Two models also feature a stainless steel eye insert to limit wear to the line. All accept lines up to 16mm Ø.

Bullseye swivel with cam cleat

Swivel bullseye accepts lines up to 12mm Ø and features a stainless steel insert and 'K' cam cleat with top fairlead. Fastening 4 x 5mm.

Pad eyes

A wide range of attachment eyes/fairleads manufactured from stainless steel. Featuring a solid stainless steel bar welded for extra security.

Folding pad eye - stainless steel pad eye with anti-vibration rubber pad. Folds flat to deck when not in use.

Double folding pad eye - with anti-vibration rubber pads and two fixing eyes which fold flat when not in use.

Deck eyes (stainless steel)

Two sizes of stainless steel deck eyes with generous eye capacity.

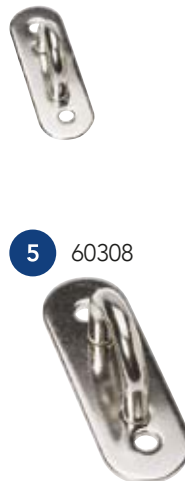


Photo No.		Part No.	Dia Ø 'A' (mm)	Height 'B' (mm)	Hole centre 'C' (mm)	Width 'D' (mm)	Fastenings Ø (mm)
Pad eyes							
1	Pad eye - double folding	60304	6	42	-	-	6
2	Pad eye - fixed	60305	4	16	30	40	5
3	Pad eye - fixed	60306	6	24	44	60	5
4	Pad eye - fixed	60307	8	28	55	80	6
5	Pad eye - fixed	60308	10	35	60	95	8
6	Pad eye - folding	60309	6	42	36	54	6

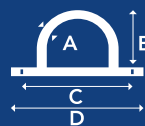
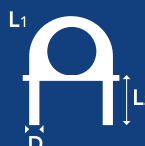


Photo No.		Part No.	Height 'A' (mm)	Width 'B' (mm)	Fastenings Ø (mm)
Deck eyes					
7	Deck eye - S/S	60410	14	14	5
8	Deck eye - S/S	60411	18	16	6



Photo No.		Part No.	Insert	Max line Ø (mm)	'D' (mm)	'L1' (mm)	'L2' (mm)
Bullseyes							
9	Through-deck	60420	✓	16	6	57	18
10	Through-deck	60421	✓	16	6	77	35
11	Through-deck	60422	X	16	6	105	60
12	Screw-to-deck	60423	X	16	6	40	-



CLEVIS PINS, SPLIT RINGS & SPRINGS

Clevis pins

A comprehensive selection of clevis pins manufactured from 316 stainless steel - as used throughout the Barton range of blocks. Supplied in packs of two.

Stand-up springs

Ideal for mounting blocks on decks to prevent tumbling or causing rope snags and deck damage. Either in stainless steel or soft plastic.

Split rings

Easy-fit stainless steel split rings for use with our clevis pins.

Supplied in two sizes and in packs of 10.



Photo No.	Part Number
Split rings	
6	Split ring - 10mm Ø - pack of 10 60190
7	Split ring - 14mm Ø - pack of 10 60191

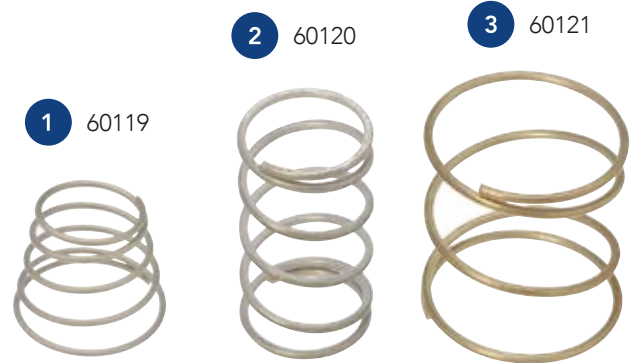


Photo No.	Part No.	Dia Ø 'D' (mm)	Height 'H' (mm)
Stand-up springs			
1	Spring - S/S (tapered)	60119	16/24 20
2	Spring - S/S	60120	20 35
3	Spring - S/S	60121	30 30
4	Spring - plastic	60122	40 50
5	Spring - plastic	60123	48 50

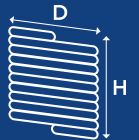
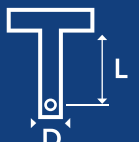


Photo No.	Part No.	Dia Ø 'D' (mm)	Length 'L' (mm)
Clevis pins			
8	Clevis pins (pack of 2)	60203	5 15
	Clevis pins (pack of 2)	60204	5 18
9	Clevis pins (pack of 2)	60207	5 24
	Clevis pins (pack of 2)	60208	5 33
	Clevis pins (pack of 2)	60209	5 39
10	Clevis pins (pack of 2)	60210	6 10
	Clevis pins (pack of 2)	60212	6 23



SHACKLES & 'S' SWIVELS

Shackles

A range of screw pin strip and forged bar shackles in stainless steel - as used throughout the Barton range.

Pin diameters up to 8mm available.



1 60311

2 60312



3 60320

4 60321



8 60701

9 60702

10 60703

Swivels

Stainless steel swivels as used throughout our block range.

Four sizes available.

Photo No.		Part No.	Pin Ø 'D' (mm)	Length 'L' (mm)	Width 'W' (mm)
Screw pin shackles (strip)					
	Strip shackle	60310	5	27	10
1	Strip shackle	60311	6	38	13
2	Strip shackle	60312	8	50	16
Screw pin shackles (bar)					
3	Bar shackle	60320	6	38	13
4	Bar shackle	60321	6	44	20
	Bar shackle	60322	8	49	16
	Bar shackle	60323	8	55	20
Rigging links					
5	Rigging link	60343	5	30	14
6	Rigging link	60344	6	37	18
7	Rigging link	60350	6	50	19
Swivels					
	Swivel	60700	5	33	8
8	Swivel	60701	5	33	9
9	Swivel	60702	5	33	11
10	Swivel	60703	6	45	14
'S' hooks					
11	'S' hook plain	60708	6	73	19
12	'S' hook with latch	60709	6	73	19



'S' hooks

A handy fitting with a multitude of uses. Manufactured from stainless steel. Supplied as either a plain hook or with spring latch fitted.



11 60708

12 60709



5 60343

6 60344

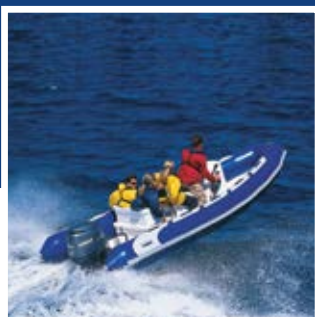
7 60350

Rigging links

Pressed stainless steel rigging links with clevis pin and ring in pin.

Sizes up to 6mm pin diameter.

CLAM SEAL™



The ClamSeal™

REPAIRS INFLATABLES – FAST

DAME award category winner.
Winner of National Marine
Manufacturer's Association Product
Innovation award

The award winning, patented ClamSeal™ repairs inflatables fast - even when wet

The ClamSeal™ can instantly repair splits and tears up to 90mm (3½") in length without the use of any hand tools or adhesive.

ClamSeal™ is a patented glue-less repair system that instantly repairs small tears or splits in inflatables above or below the waterline - regardless of the fact that the material may be wet.

The system works by using two half 'shells' that screw together tightly, using the inflatable material itself as a water and air-tight seal. It is quick and easy to fit and effects an immediate repair which can keep you afloat until a more permanent repair can be made.

- Quick and easy to fit
- Requires no adhesive or tape
- Can be used above or below the waterline
- Can be used on wet materials
- Provides an instant repair
- Re-useable again and again.

The ClamSeal™ can be carried as part of your emergency equipment onboard. It can be used at sea, on shore; even underwater as no adhesive or tape is involved. The clever mechanics of the ClamSeal™ design mean this simple product can keep you safely afloat.

The ClamSeal™ has become a permanent part of the safety kit on RIBs around the world and is continuing to amaze those who have used them - an effective, low cost solution to an otherwise complicated problem.

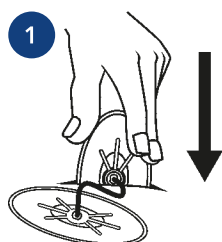


Pat pending GB0329522.7

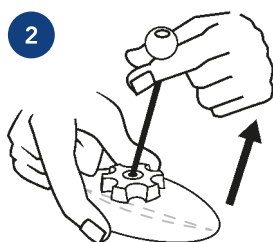
Part No.	
Clam Seal™	
Barton Clam Seal™	60001

ClamSeal™ is suitable for use on:

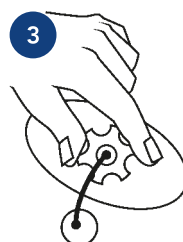
- RIBs
- Dinghies
- Liferafts
- Buoyancy bags
- Most inflatable products.



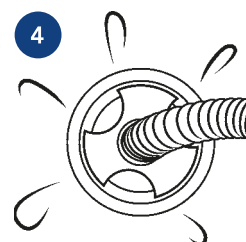
1
Open the ClamSeal™ and insert the base plate into the split.



2
Pull the plates of the ClamSeal™ together, across the split, using the lanyard



3
With the two plates pulled together, simply hand tighten the nut for a Clam-tight seal.



4
Reinflate and you're safe to continue on your way.