

TRAVELLER SYSTEMS

Complete packs

Pre-packaged mainsheet systems with all components required in one complete kit - sliding bolt track, traveller, end fittings, plastic end caps, pilot track and full fitting instructions.

Travellers, end fittings and track are manufactured from high quality marine grade aluminium with our unique grey anodised finish for added protection.

Sliding bolt track allows for a smooth, clean profile and also makes retro-fitting easier as bolts can slide along the extrusion to match existing fastening holes.

- Three sizes - for yachts up to 14m LOA (36ft)
- 2:1 or 4:1 purchase systems
- Recirculating precision ground Delrin ball system.

Guide to choice of size

Size 1 for yachts up to 8.5m (28.5ft)

Size 2 for yachts up to 11.0m (36ft)

Size 3 for yachts up to 14.0m (45ft)



2:1 Purchase Kit

with cleats at 70° on end fittings

- 1.4m (size 1) / 1.6m (size 2) / 1.8m (size 3) sliding bolt track
- Traveller car with single shackle take off
- End fittings (pair)
- Plastic end caps (pair)
- Pilot track and fitting instructions

Size 1

20900

Size 2

24900

Size 3

30900



4:1 Purchase Kit

with cleats at 70° on end fittings

- 1.4m (size 1) / 1.6m (size 2) / 1.8m (size 3) sliding bolt track
- Traveller car with single shackle take off
- End fittings (pair)
- Plastic end caps (pair)
- Pilot track and fitting instructions

Size 1

20901

Size 2

24901

Size 3

30901



4:1 Purchase Kit

Incorporating cleats on traveller

- 1.4m (size 1) / 1.6m (size 2) / 1.8m (size 3) sliding bolt track
- Traveller car with single shackle take off
- End fittings (pair)
- Plastic end caps (pair)
- Pilot track and fitting instructions

Size 1

20902

Size 2

24902

Size 3

30902



NOTE: All systems available in black and silver anodised finish

Barton Marine | control the power | bartonmarine.com

TRAVELLER SYSTEMS

Removable mainsheet system creates more space in the cockpit

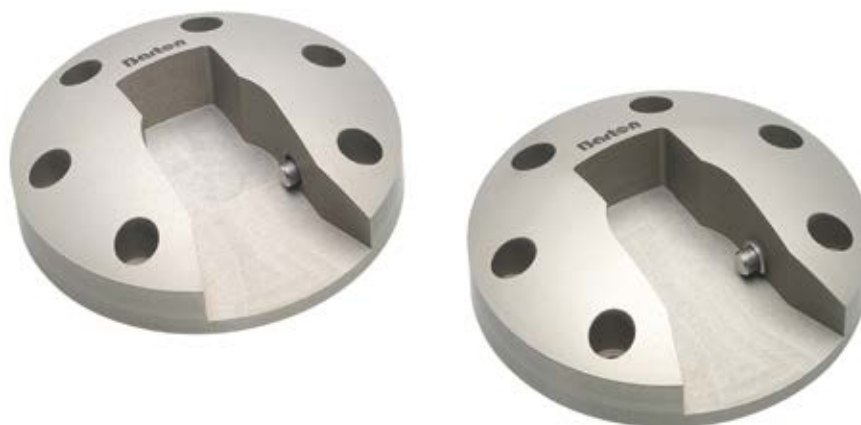
The removable mainsheet track system, which is ideally suited for all yachts up to 11.0m (36ft)

This adaptable mainsheet track system is designed to span between the cockpit seats when sailing but is easily removed to give maximum cockpit space when you want to relax on board. A perfect solution for converting coach roof mainsheet sheeting systems to one that is within reach of the helmsman, offering greater sail control and safety.

The removable track system is available in two sizes and can be used on yachts up to a maximum of 11.0m (36ft). The track has a maximum unsupported length of up to 700mm (28in). It can be attached and removed in seconds and uses Barton's beam section track.

All systems available in black anodised finish

1 20090



Barton Marine's removable track system is simple to install. End plates are bolted on both sides of the cockpit. Slide the track under these plates and then lift vertically, which automatically locks in position. To remove the mainsheet track, simply push in the locking pins on each side, lower the track and slide it out.

Photo No.	Part No.	Max unsupported length
Beam track end fittings (pair)		
1	Fits size 1 20003 beam track	20090 400mm
	Fits size 2 24003 beam track	24090 700mm
Beam track		
	Size 1	Size 2
Per metre	20003	24003
0.6 metre	20013	24013
1.2 metre	20023	24023
1.8 metre	20033	24033
End cap (pair)	20100	24100
Complete removable mainsheet track system kits		
	Part No.	
2	Suitable for yachts up to 8.5m (28.5ft)	20910
	Suitable for yachts up to 11.0m (36ft)	24910

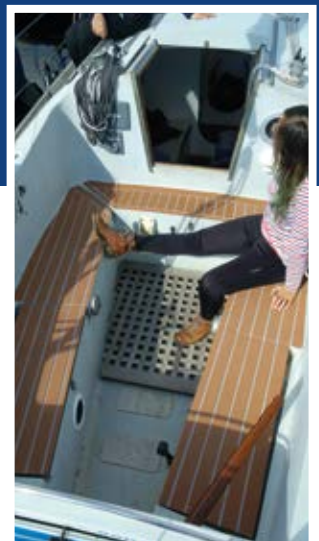
Specifications	Size1	Size 2
Max unsupported length	400mm	700mm
H Height	27mm	34.5mm
W Width W	20mm	26mm
Width W2	26mm	34mm

Beam track

Use beam track when spanning cockpits or companionway hatches, where unsupported length is required. A minimum of three fastenings should be used on either side of the unsupported length - place fastenings at 100mm centres in supported sections.

Ensure washers are fitted under the head of the bolt and between track & deck to ensure a secure seal.





Barton's removable mainsheet system creates more space in the cockpit



2 20910

Complete removable mainsheet track system kits

- Part no 20910** Suitable for yachts up to 8.5m (28.5ft)
- Size 1 beam track 1m length
 - 1 pr removable mainsheet track plates
 - 4:1 traveller system with cleats on the traveller
- Part no 24910** Suitable for yachts up to 11m (36ft)
- Size 2 beam track 1m length
 - 1 pr removable mainsheet track plates
 - 4:1 traveller system with cleats on the traveller

Available in black and silver
anodised finish

The maximum unsupported span of the beam track is

Size 1 = 400mm for yachts up to 8.5m (28ft)

Size 2 = 700mm for yachts up to 11.0m (36ft)

(Size 2 = 900mm for yachts up to 9.75m (32ft))

A pelican hook assembly mid track connected to a floor mounted pad eye doubles the unsupported length, visit <http://www.bartonmarine.com/products-removable-mainsheet-systems.asp> for more information.

MAINSHEET SYSTEMS

Modular components for recirculating ball bearing traveller systems

Choose the individual components required to build the system which is the most suitable for your boat. See pages 48 to 51 for pre-designed combinations available.

Available in black and silver anodised finish

- Recirculating precision ground Delrin ball system.
- Three sizes for yachts up to 14m LOA (46ft).
- Build your choice of traveller, cleating system and end fittings

Guide to choice of size:

Size 1 for yachts up to 8.5m (28.5ft)

Size 2 for yachts up to 11.0m (36ft)

Size 3 for yachts up to 14.0m (46ft)

Please see our suggested boat size table on page 10 & 11.



Traveller car

With double shackle take off and internal control line sheaves.

Size 1	Size 2	Size 3
20103	24103	30103



Traveller car

With single toggle take off and internal control line sheaves.

Size 1	Size 2	Size 3
20105	24105	30105



Traveller car

With double toggle take off and internal control lines.

Size 1	Size 2	Size 3
20107	24107	30107



End fitting cleat plate

At 90° to track (supplied in pairs).

Size 1	Size 2	Size 3
20113	24113	30113



Traveller cleat plate assembly

(supplied in pairs).

Size 1	Size 2	Size 3
20117	24117	30117



End fitting cleat plate

At 70° to track (supplied in pairs).

Size 1	Size 2	Size 3
20114	24114	30114

Double take off travellers

With either shackle or toggle attachments, these allow coarse/fine tune mainsheet systems to be achieved. They can also be used with a link plate (page 50) to allow for increased rolling load with the longer cars (see page 12).

Control line sheave cage

Size 1 uses a plain bearing sheave, sizes 2 and 3 feature our low friction large diameter ball bearing sheave system.



Control line sheave cage

For use on travellers and end fittings (supplied in pairs).

Size 1	Size 2	Size 3
20112	24112	30112

	Length (mm)	Weight (g)	Width (mm)	Sheave ø (mm)	Max control line ø (mm)
Control line sheave cage					
Size 1 - 20112	41	15	38	20	6
Size 2 - 24112	52	27	49	30	8
Size 3 - 30112	65	42	57	35	8

MAINSHEET SYSTEMS

Travellers - recirculating ball bearing - Single take off

The unique Barton modular system allows a wide variety of systems to be constructed, giving multiple control line options. In the following tables, order both part numbers listed (where appropriate) for the traveller illustrated.

Shackle take off

Feature a high load forged stainless steel pivoting shackle.

Toggle take off

Feature a solid cast stainless steel upstand with a soft rubber anti-tumble bearing fitted, preventing damage when blocks are not under load. These take offs accept the swivel post from our cruiser blocks and help achieve a truly low profile system.

All systems available in black or silver anodised finish



Traveller car

With single shackle take off and internal control line sheaves.

Size 1	Size 2	Size 3
20101	24101	30101



Traveller car

With single shackle take off and integral control line sheaves 2:1 or 3:1 purchase.

Size 1	Size 2	Size 3
20101	24101	30101



Traveller car

With single shackle take off 4:1 purchase. Comprises:-

Size 1	Size 2	Size 3
20101	24101	30101
20112	24112	30112

Order both part numbers to achieve the product shown



Traveller car

With single toggle take off 4:1 purchase. Comprises:-

Size 1	Size 2	Size 3
20105	24105	30105
20112	24112	30112

Order both part numbers to achieve the product shown



Traveller car

With cleats and single shackle take off 4:1 purchase. Comprises:-

Size 1	Size 2	Size 3
20101	24101	30101
20117	24117	30117

Order both part numbers to achieve the product shown



Traveller car

With cleats and single toggle take off 4:1 purchase. Comprises:-

Size 1	Size 2	Size 3
20105	24105	30105
20117	24117	30117

Order both part numbers to achieve the product shown

MAINSHEET SYSTEMS

Travellers - recirculating ball bearing - double take off



Traveller car

With double shackle take off and integral control line sheaves 2:1 or 3:1 purchase.

Size 1	Size 2	Size 3
20103	24103	30103



Traveller car

With double toggle take off and integral control line sheaves 2:1 or 3:1 purchase.

Size 1	Size 2	Size 3
20107	24107	30107

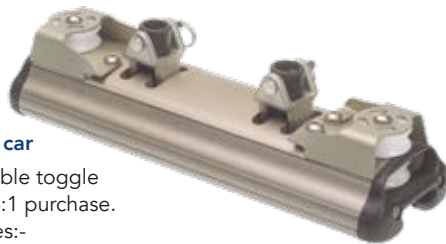


Traveller car

With double shackle take off 4:1 purchase.
Comprises:-

Size 1	Size 2	Size 3
20103	24103	30103
20112	24112	30112

Order both part numbers to achieve the prout shown



Traveller car

With double toggle take off 4:1 purchase.
Comprises:-

Size 1	Size 2	Size 3
20107	24107	30107
20112	24112	30112

Order both part numbers to achieve the prout shown



Traveller car

With cleats and double shackle take off 4:1 purchase.
Comprises:-

Size 1	Size 2	Size 3
20103	24103	30103
20117	24117	30117

Order both part numbers to achieve the prout shown



Traveller car

With cleats and double toggle take off 4:1 purchase.
Comprises:-

Size 1	Size 2	Size 3
20107	24107	30107
20117	24117	30117

Order both part numbers to achieve the prout shown



Link plate

For long double toggle take off cars. Heavy duty stainless plate that spans toggles - for heavy duty applications.

Size 1	Size 2	Size 3
20202	24202	30202

All systems available in black and silver anodised finish

End fittings - recirculating ball bearing

The unique Barton modular system allows a wide variety of systems to be constructed, giving multiple control line and cleating options for track end fittings.

In the following tables, order both part numbers listed (where appropriate) for the traveller end fitting illustrated.



End Fitting

2:1 or 3:1 purchase (supplied in pairs).

Size 1	Size 2	Size 3
20110	24110	30110



End fitting

4:1 purchase (supplied as a pair of each p/no).

Size 1	Size 2	Size 3
20110	24110	30110
20112	24112	30112

Order both part numbers to achieve the product shown



End fitting with cleat at 90°

2:1 or 3:1 purchase (supplied as a pair of each p/no).

Size 1	Size 2	Size 3
20110	24110	30110
20113	24113	30113

Order both part numbers to achieve the product shown



End fitting with cleat at 70°

2:1 or 3:1 purchase (supplied as a pair of each p/no).

Size 1	Size 2	Size 3
20110	24110	30110
20114	24114	30114

Order both part numbers to achieve the product shown



End fitting with cleat at 90°

4:1 purchase (supplied as a pair of each p/no).

Size 1	Size 2	Size 3
20110	24110	30110
20113	24113	30113
20112	24112	30112

Order all part numbers to achieve the product shown



End fitting with cleat at 70°

4:1 purchase (supplied as a pair of each p/no).

Size 1	Size 2	Size 3
20110	24110	30110
20114	24114	30114
20112	24112	30112

Order all part numbers to achieve the product shown



Crash stop for Genoa track

(supplied in pairs.)

Size 1	Size 2	Size 3
20310	24310	30310



Torlon balls

Torlon ball packages available for all traveller sizes.

	Size 1	Size 2	Size 3
Short	20200	24200	30200
Long	20201	24201	30201

Travellers

Aesthetic design, clean lines, high-tech materials and finishes all go to make this range of traveller cars a functional and practical enhancement for any sailboat.

All end fittings feature a soft rubberised moulded cap, designed to withstand high impact without causing damage.

Standard travellers run on precision ground Delrin balls.

A Torlon ball package is available where higher load applications are required. Torlon balls give up to 40% more load bearing capacity. These packages are available in all three sizes and for long or short travellers.

	Length single take off (mm)	Length double take off (mm)	Weight single take off (g)	Weight double take off (g)	Width (mm)	Fastenings (mm)	Width control line cleats (mm)	Height 2:1 (mm)	Height 4:1 (mm)	SWL (kg)	Max control line ø (mm)
Travellers											
Size 1	132	204	252	411	57	4	98	30	43	500	6
Size 2	166	254	547	923	70	6	120	44	57	700	8
Size 3	198	292	872	1378	87	6	130	47	65	1000	8

End Fittings

	Length (mm)	Weight (g)	Width (mm)	Width with control line cleats (mm)	Height 2:1 (mm)	Height 4:1 (mm)	Max control line ø (mm)
End fittings							
Size 1 - 20110	67	117	59	100	39	50	6
Size 2 - 24110	88	234	72	127	50	65	8
Size 3 - 30110	96	362	85	137	60	74	8

Cam cleats

From our Kevlar 'K' cam range. See page 86 and 87 for full details.

TRACK

MODULAR COMPONENTS

Track 20mm / 26mm / 30mm

Per metre or in set lengths - choose from the table below.

Lightweight hollowed aluminium track that retains high load capacity.

The grey anodised finish is extremely durable and adds to the friction-free efficient performance of these products.

Three styles of track are available – drilled, sliding bolt and beam:

Drilled track

The most commonly used, drilled and countersunk at 100mm centres, with the first hole at 50mm from track end.

Specifications	SIZE 1	SIZE 2	SIZE 3
W Width	20mm	26mm	30mm
H Height	12mm	15mm	18mm
 Fastenings	5mm	6mm	8mm

Sliding bolt track

To allow for a smooth profile with no visible fastenings. Also makes retro fit an easier job, as bolts can slide along the extrusion to match existing fastening holes.

Ensure washers are fitted beneath track to ensure a good seal (see diagram).

Specifications	SIZE 1	SIZE 2	SIZE 3
W Width	20mm	26mm	30mm
H Height	12mm	16.5mm	19mm
 Fastenings	5mm	6mm	8mm

Beam track

Use beam track when spanning cockpits or companionway hatches, where unsupported length is required. A minimum of three fastenings should be used on either side of the unsupported length - place fastenings at 100mm centres in supported sections.

Ensure washers are fitted under the head of the bolt and between track and deck to ensure a secure seal (see diagram).

Specifications	SIZE 1	SIZE 2	SIZE 3
Max unsupported length	400mm	700mm	800mm
W Width 1	20mm	26mm	30mm
Width 2	26mm	34mm	40mm
H Height	27mm	34.5mm	40.5mm
 Fastenings	6mm	8mm	10mm

Curved track

Track can be custom curved to special requirements.

Please enclose a detailed drawing when ordering, giving all dimensions of curvature.

Find out more at: <http://bartonmarine.com/tech-info-track-curving-specification.asp>

All systems available in black and silver anodised finish



Photo No.		Size 1	Size 2	Size 3
Drilled track				
1	Per metre	20000	24000	30000
	0.6 metre	20010	24010	30010
	1.2 metre	20020	24020	30020
	1.8 metre	20030	24030	30030
	2.4 metre	20040	24040	30040
	3.0 metre	20050	24050	30050
	5.0 metre	20060	24060	30060
2	End cap (pair)	20001	24001	30001
Sliding bolt track				
4	Per metre	20002	24002	30002
	0.6 metre	20012	24012	30012
	1.2 metre	20022	24022	30022
	1.8 metre	20032	24032	30032
	2.4 metre	20042	24042	30042
	3.0 metre	20052	24052	30052
	5.0 metre	20062	24062	30062
	End cap (pair)	20001	24001	30001
Beam track				
5	Per metre	20003	24003	30003
	0.6 metre	20013	24013	30013
	1.2 metre	20023	24023	30023
	1.8 metre	20033	24033	30033
	2.4 metre	20043	24043	30043
	3.0 metre	20053	24053	30053
	5.0 metre	20063	24063	30063
3	End cap (pair)	20100	24100	30100

MAINSHEET SYSTEM

I SECTION TRACK & TRAVELLERS

19mm I Section Track & Traveller

For yachts up to 7.3m (24ft) LOA.

A comprehensive range of traveller systems suitable for use on dinghies, dayboats and light cruising yachts.

Also ideal for use in self-tacking jib systems on larger yachts and catamarans.

Manufactured from marine grade aluminium and stainless steel. I section track is silver anodised. Fittings are black anodised.

- Stainless steel captive bearing ball race wheels
- Rugged, lightweight I section track
- Various control line options
- Cam cleat versions feature 'K Cam' Kevlar cleats



1 19100



2 19103

6 19000

4 19901

5 19902

3 19900



Photo No.		Part No.	End fitting	Length (mm)	Width (mm)	Break load (kg)	SWL (kg)	Weight (g)
19 mm Traveller cars								
1	4 Wheel plain	19100	19900	52	38	1200	600	127
2	4 Wheels, control cleats + sheaves	19103	19902	122	75	1000	500	339
19mm Track end fittings (pair)								
3	Adjustable plunger stops	19900	-	38	29	-	-	83
4	Plastic track end	19901	-	-	-	-	-	16
5	End fitting - horizontal sheave	19902	-	45	22	-	-	44

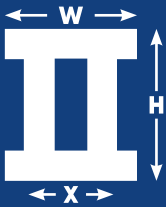
Photo No.	Part No.	
19 mm I Section track		
6	Per metre	19000
	0.6 metre	19010
	1.2 metre	19020
	1.8 metre	19030
	2.4 metre	19040
	3.0 metre	19050
	5.0 metre	19060
	Track end cap (pair)	19901

19mm I Section Track

Extruded with a hollow section for lightweight and high load capacity. Drilled for fastenings and plunger stops.

Supplied in metric lengths as shown in the table above.

W	Width W	19mm		Fastenings	5mm
H	Height	24mm		Fastening centre	100mm
W	Width X	11mm		Plunger hole centres	50mm



	Weight	479g per m
--	--------	------------

MAINSHEET SYSTEM

I SECTION TRACK & TRAVELLERS



24mm I Section Track & Traveller

For yachts up to 10.7m (35ft) LOA.

A mid range of traveller systems, manufactured from marine grade aluminium and stainless steel. All feature heavy duty attachments. Control line blocks (where fitted) have low friction ball bearing sheaves, accepting lines up to 8mm diameter. I section track is silver anodised. Fittings are black anodised. End fittings are secured through track with track fastening bolts.

- Heavy duty take off attachments
- Stainless steel captive bearing ball race wheels
- Ball bearing control line blocks
- End fittings give varied control line options
- Cam cleat versions feature 'K cam' Kevlar cleats.

Photo No.		Part No.	End fitting	Length (mm)	Width (mm)	Break load (kg)	SWL (kg)	Weight (g)
24mm Traveller cars								
1	4 Wheel plain	26101	26900	69	47	2560	1280	257
2	4 Wheels, control line sheave	26102	26110	69	47	2560	1280	287
24mm Track end fittings (pair)								
3	End fitting with sheave + cleat	26110	-	90	75	-	-	426
	End fitting with double sheave + cleat	26111	-	90	75	-	-	445
4	Adjustable plunger stops	26900	-	32	30	-	-	64
5	Plastic track end	26901	-	-	-	-	-	20
6	Crash stop	26902	-	32	30	-	-	36

Photo No.		Part number
24 mm I Section track		
7	Per metre	26000
	0.6 metre	26010
	1.2 metre	26020
	1.8 metre	26030
	2.4 metre	26040
	3.0 metre	26050
	5.0 metre	26060
5	Track end cap (pair)	26901

24mm I Section Track

Extruded with a hollow section for lightweight and high load capacity. Silver anodised drilled for fastenings and plunger stops.

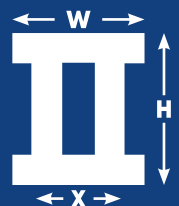
Supplied in metric lengths as shown in the table above.

W	Width W	24mm		Fastenings	5mm
H	Height	28mm		Fastening centre	100mm
W	Width X	16mm		Plunger hole centres	50mm



Weight

721g per m



MAINSHEET SYSTEM

I SECTION TRACK & TRAVELLERS

28mm I Section Track & Traveller

For yachts up to 12m (40ft) LOA.

A range of traveller systems for larger yachts up to 12m LOA running on our heavy duty track.

All feature heavy duty attachments, through-bolted for added security. Control line blocks (where fitted) have low friction ball bearing sheaves, accepting lines up to 10mm diameter. I section track is silver anodised. Fittings are black anodised.

End fittings are secured through track with track fastening bolts.

- Stainless steel captive bearing ball race wheels
- Rugged, lightweight I section track
- Cam cleat versions feature 'K cam' Kevlar cleats
- End fittings give varied control line options
- Ball bearing control line blocks.
- Anodised in silver or black.



10 28110



11 28112

8 28101



9 28102

15 28000

14 28902

12 28900

13 28901

Curved track

I section track can be custom curved to special requirements. Please enclose a detailed drawing when ordering, giving all dimensions of curvature.

Find out more at:

<http://bartonmarine.com/tech-info-track-curving-specification.asp>

Photo No.		Part No.	End fitting	Length (mm)	Width (mm)	Break load (kg)	SWL (kg)	Weight (g)
28mm Traveller cars								
8	4 Wheel plain	28101	28900	88	54	2522	1250	438
9	4 Wheels, control line sheaves	28102	28110	88	54	2500	1250	472
28mm Track end fittings (pair)								
10	End fitting with sheave, becket + cleat	28110	-	108	90	-	-	620
11	End fitting with double sheave, becket + cleat	28112	-	108	90	-	-	724
12	Adjustable plunger stops	28900	-	35	34	-	-	112
13	Track end cup (pr)	28901	-	-	-	-	-	42
14	Crash stop	28902	-	35	34	-	-	76

Photo No.		Part No.
28 mm I Section track		
15	Per metre	28000
	0.6 metre	28010
	1.2 metre	28020
	1.8 metre	28030
	2.4 metre	28040
	3.0 metre	28050
	5.0 metre	28060
13	Track end cap (pair)	28901

28mm I Section Track

Extruded with a hollow section for lightweight and high load capacity. Silver anodised drilled for fastenings and plunger stops.

Supplied in metric lengths as shown in the table above.

W	Width W	28mm		Fastenings	6mm
H	Height	34mm		Fastening centre	100mm
W	Width X	17mm		Plunger hole centres	50mm



Weight 1041g per m



TOWABLE GENOA CAR SYSTEMS

Towable Genoa Car System

Available in three sizes for yachts up to 14m LOA (46ft) - all three run on the three track types available.

2:1, 3:1 and 4:1 systems can be achieved with the unique Barton modular system. Modular components are listed on pages 48 to 52.

Featuring a precision turned Ertalyte sheave running on a large diameter bearing. The bolt through sheave design not only looks good, but gives added strength to these rugged units.



Genoa car
With integral control line sheaves (4:1)

Size 1	Size 2	Size 3
20300	24300	30300
20112	24112	30112



Genoa car
With integral sheaves (2:1, 3:1 or 4:1).

Size 1	Size 2	Size 3
20300	24300	30300

2:1 Purchase system
NOTE: All systems available in black anodised finish



End fitting
With integral sheaves (supplied in pairs).

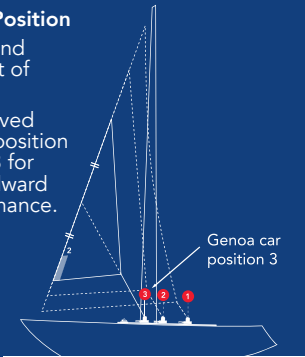
Size 1	Size 2	Size 3
20110	24110	30110

Order both part numbers to achieve the product shown

	Length (mm)	Weight (g)	Width (mm)	Height (mm)	SWL (kg)	Sheave ø (mm)	Sheave width (mm)
Genoa cars							
Size 1 - 20300	118	400	57	97	500	50	36
Size 2 - 24300	145	775	70	116	700	60	36
Size 3 - 30300	170	1181	87	133	1000	70	45

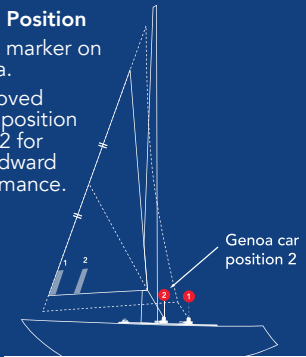
Working Jib Position

Furled to second marker on foot of Genoa.
Genoa car moved forward from position 2 to position 3 for optimum windward sailing performance.



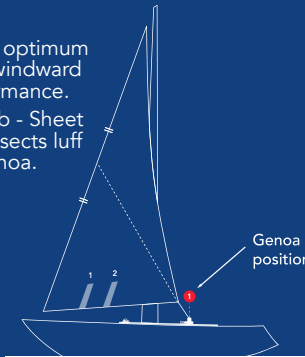
No. 2 Genoa Position

Furled to first marker on foot of Genoa.
Genoa car moved forward from position 1 to position 2 for optimum windward sailing performance.



Full Sail

Genoa car in optimum position for windward sailing performance.
Rule of thumb - Sheet lead angle bisects luff length of Genoa.



TOWABLE T TRACK GENOA CARS

An established favourite with sailors around the globe, Barton T track genoa cars are compatible with most types of functional T Track. The advantage of a line adjust system is that the crew do not have to leave the safety of the cockpit to obtain perfect headsail trim.

We have developed our current design and have incorporated control line sheaves within the body of the sliders and end fittings. The result is a more compact unit with less likelihood of sheet fouling, plus they look great too!

The towable T track genoa car system is available in three sizes for yachts from 6m –12m (18’–40’), this includes 20mm T track, 25mm T track and 32mm T track (both standard and heavy duty options).

Photo No.		Part No
Genoa cars with towable end fittings		
1	20mm T track towable genoa car	22220
2	20mm T track end fitting (single)	22221
3	25mm T track towable genoa car	25220
4	25mm T track end fitting (single)	25221
5	32mm T track towable genoa car	32210
6	32mm T track towable genoa car (heavy duty)	32211
7	32mm T track end fitting (single)	32221



Please see our suggested boat size table on page 10 & 11, to assist you in making the correct choice when determining the correct size of fitting for your application.