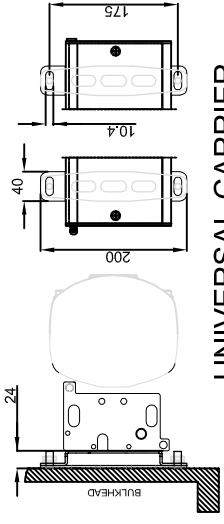
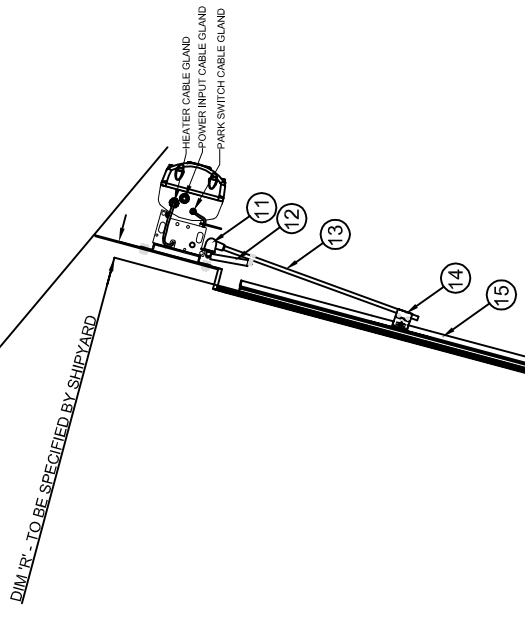
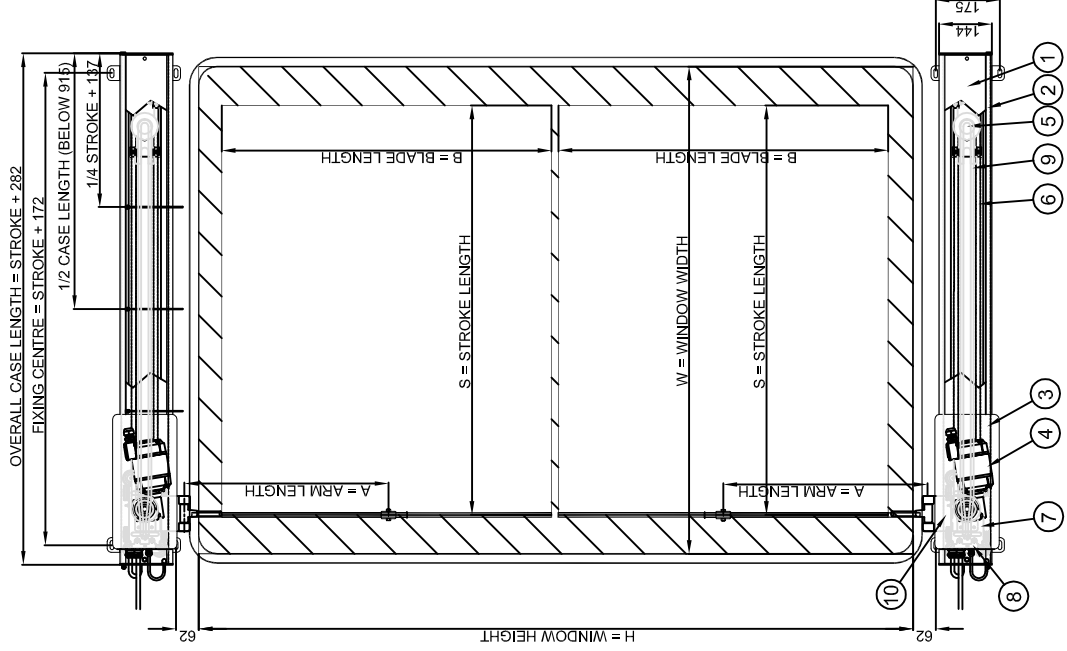
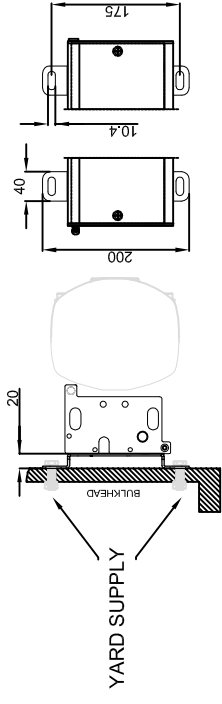


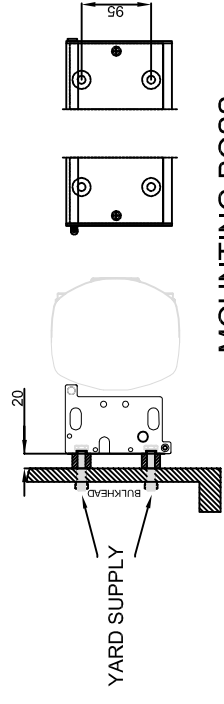
STANDARD ASSEMBLIES VIEWED FROM OUTSIDE THE WINDOW



UNIVERSAL CARRIER



BRACKET (STANDARD)



MOUNTING BOSS

MOUNTING OPTIONS

15	WIPER BLADE	1	SS 316
14	BLADE CLIP	1	SS 316
13	WIPER ARM TUBE	1	SS 316
12	ADDITIONAL ARM SPRING	1	SS 316
11	ARM PIVOT BLOCK	1	SS 316
10	ARM MOUNTING PLATE	1	SS 316
9	CASE HEATER	1	SS 316
8	PARK SWITCH	1	SS 316
7	CARRIAGE PLATE	1	SS 316
6	DRIVE BELT	1	SS 316
5	IDLER PULLEY ASSEMBLY	1	SS 316
4	MOTOR	1	AL. ALLOY
3	MOTOR POD ASSEMBLY	1	AL. ALLOY
2	COVER ASSEMBLY	1	AL. ALLOY
1	CASE ASSEMBLY	1	AL. ALLOY

FIRST USED ON				MATERIAL			
ISS.	DIN	DATE	CHKD-	ISS.	DIN	DATE	CHANGED-
1		20.10.15					
<p>3rd ANGLE PRO. </p> <p>TOLEANCES UNLESS OTHERWISE STATED DIMENSIONS TO 1 PLACE ± 0.2mm DECIMAL DIMS. TO 1 PLACE ± 0.25mm NO DECIMAL PLACES ± 0.5mm ANGLES ± 1°</p>				<p>WIPER STATUS</p> <p>THIS COMPANY'S WIPER BLADES MEASURE TO A MET NOT BE REPRODUCED WITHOUT WRITTEN PERMISSION OF THE COMPANY OR USED FOR ANY PURPOSE OTHER THAN THAT FOR WHICH IT HAS BEEN SUPPLIED.</p>			
<p>MAT'L- ST ST S316</p>				<p>FINISH- NONE</p>			
<p>SCALE- NTS DRAWN- JM</p>				<p>CHKD-</p>			
<p>ISS. DIN DATE</p>				<p>ISS. DIN DATE</p>			
<p>20.10.15</p>				<p>20.10.15</p>			
<p>TITLE-</p>				<p>TYPE D EXTERNAL MOTOR WIPER UNIT</p>			
<p>DRAWING No.</p>				<p>ENGLAND</p>			
<p>REDDITCH</p>				<p>MARINE LIMITED</p>			