

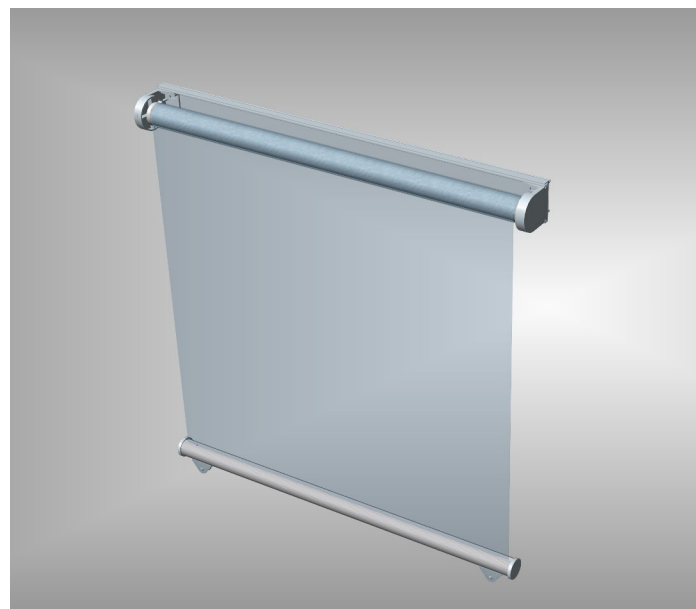
Visi-Plus Light Extra Sunscreen

Visi-Plus sunscreens are used for clear and safe vision in situations where sunshine and glare from outside need to be countered.

Visi-Plus Light Extra is a simple solution for a standard rolling system, which is easy to install. Because of using a fixing strip there are more mounting options. The Light Extra is ready for assembly no tensioning is needed this is done in the factory.

Features:

- Simple solution for standard rolling system
- Several types of operations available
- Cord guided with a strong tension spring
- Chain guided with a synthetic chain
- Electrical guided with a 24Vdc tube motor.
- Maximum width of 3,5 meters and dropdown of 4 meters
- Two mounting brackets
- Using film with special advantages
- Reject up to 94.9% of the total solar energy
- Gives a better view by sunny or misty weather
- Create daytime privacy
- Reduce eye straining glare while maintaining the full view out
- Stop 99% of the harmful fade-causing ultraviolet rays, protecting all interior furnishings from sun damage
- Retain interior heat, similar to a second pane of glass
- Reduce air conditioning costs
- Improve living and working environmental conditions



Visi-Plus Light Extra with electrical guided

Visi-Plus Light Extra

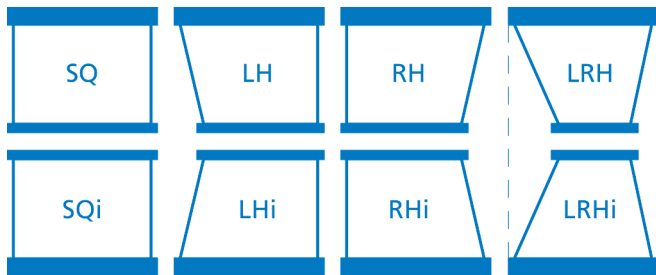
DATA SUMMARY

Maximum sunscreen dimension

- Length 3500mm
- Width 4000mm

Window types

SQ, SQi, LH, LHi, RH, RHi, LRH, LRHi



Control options

- Manual Cord guided (CRD)
- Manual Chain guided (CH)
- Electrical Motor guided (E)

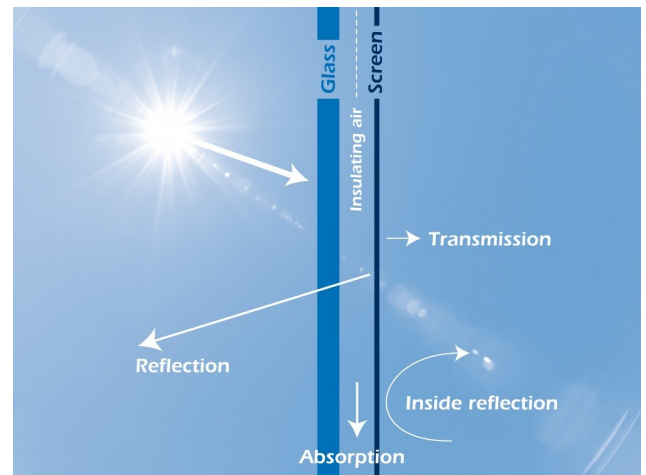
All control options can be ordered left- or right side.

Motor specifications for Electrical Motor guided

- Brand Somfy
- Operations temperature -10 to 60 °C
- Motor IP30
- Power supply 24 VDC nominal (min. 20, max. 27 VDC) + up, - down
- Complies with directive 1999/5/EG
- Option Wireless remote control

Film specifications

- Sheet thickness 100µm
- Layers 3
- Visible light transm. 8.3%
- Visible light refl. 8%
- Glare reduction 91%
- UV transmission <1%
- Solar energy refl. 22.4%
- Solar energy abs. 57.0%
- Total energy rej. 63.4%



Film and screen width

- Manual Cord guided (CRD) - 16mm
- Manual Chain guided (CH) - 16mm
- Electrical Motor guided (E) - 18mm

Compliance

The sunscreens comply with international rules and regulations for bridge division and bridge equipment NEN and IS 8468. All sunscreens are SI approved.