

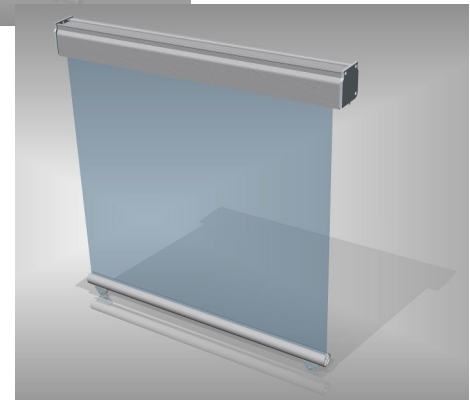
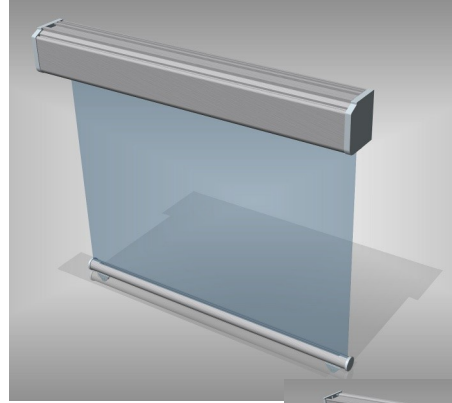
# Visi-Plus Cassette (CS/CL) Sunscreen

Visi-Plus sunscreens are used for clear and safe vision in situations where sunshine and glare from outside need to be countered.

Visi-Plus Cassette is a luxurious looking system for sunscreens. There are two cassette versions: the "Small, CS" and "Large, CL" cassette.

## Features:

- Luxurious looking closed system
- Two types of cassettes: Small (CS) and Large (CL)
  - CS has a maximum width of 2,7 meters
  - CL has a maximum width of 3,5 meters
- Several types of operations available
  - Cord guided with a strong tension spring
  - Chain guided with a synthetic chain
  - Electrical guided with a 24Vdc tube motor (CL only)
- Maximum dropdown of 4 meters
- Using film with special advantages
  - Reject up to 94.9% of the total solar energy
  - Gives a better view by sunny or misty weather
  - Create daytime privacy
  - Reduce eye straining glare while maintaining the full view out
  - Stop 99% of the harmful fade-causing ultraviolet rays, protecting all interior furnishings from sun damage
  - Retain interior heat, similar to a second pane of glass
  - Reduce air conditioning costs
  - Improve living and working environmental conditions



*Visi-Plus Cassette Large and Small*



*Visi-Plus Cassette with cord guided*

# Visi-Plus Cassette

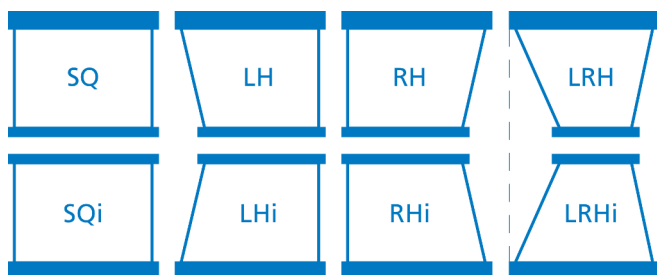
## DATA SUMMARY

### Maximum sunscreen dimensions

Cassette Small	Cassette Large
• Length 2700mm	• Length 3500mm
• Width 4000mm	• Width 4000mm

### Window types

SQ, SQi, LH, LHi, RH, RHi, LRH, LRHi



### Control options

Cassette Small	Cassette Large
• Manual Cord guided	• Manual Cord guided
• Manual Chain guided	• Electrical Motor guided

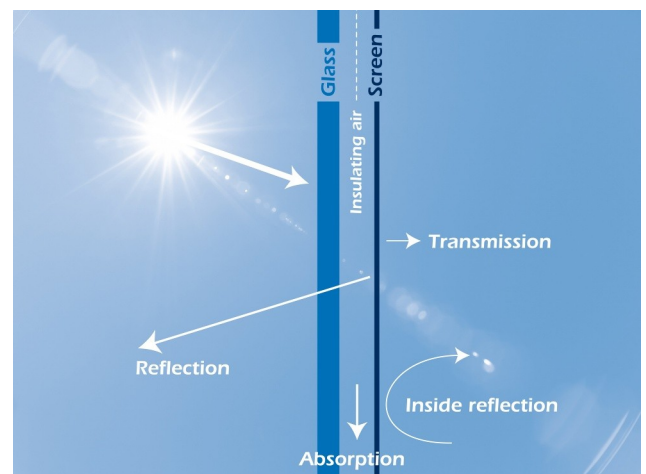
All control options can be ordered left- or right side.

### Motor specifications for Electrical Motor guided

• Brand	Somfy
• Operations temperature	-10 to 60 °C
• Motor	IP30
• Power supply	24 VDC nominal (min. 20, max. 27 VDC) + up, - down
• Complies with directive	1999/5/EG
• Option	Wireless remote control

### Film specifications

• Sheet thickness	100µm
• Layers	3
• Visible light transm.	8.3%
• Visible light refl.	8%
• Glare reduction	91%
• UV transmission	<1%
• Solar energy refl.	22.4%
• Solar energy abs.	57.0%
• Total energy rej.	63.4%



### Film and screen width

Cassette Small

- Manual Cord guided (CRD) - 18mm
- Manual Chain guided (CH) - 22mm

Cassette Large

- Manual Cord guided (CRD) - 25mm
- Electrical Motor guided (E) - 27mm

### Compliance

The sunscreens comply with international rules and regulations for bridge division and bridge equipment NEN and IS 8468. All sunscreens are SI approved.