



Compact 600/700



HR600



HR700

Model	HR600	HR700
VESSEL LENGTH	5 - 8m	8 - 11m
	16 - 26ft	26 - 35ft
POWER SUPPLY (DC)	12V	12V
MOTOR (Watts)	200	600
MAX LOAD	272kg	318kg
	600lb	700lb
WORK LOAD	29kg	57kg
	63lb	125lb
AMPS WORK LOAD	40	80
MAX LINE SPEED	25m/min	25m/min
	80ft/min	80ft/min
CHAIN SIZE	6 - 7mm	6 - 8mm
	1/4 - 9/32"	1/4 - 5/16"
ROPE SIZE	12mm	12 - 14mm
	1/2"	1/2 - 9/16"
NET WEIGHT	DC 10kg	DC 12kg
	DC 22lb	DC 26lb
MANUAL OPERATION	N/A	N/A

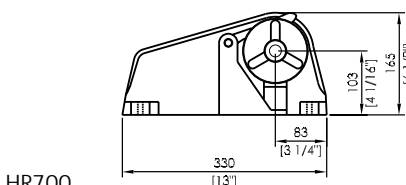
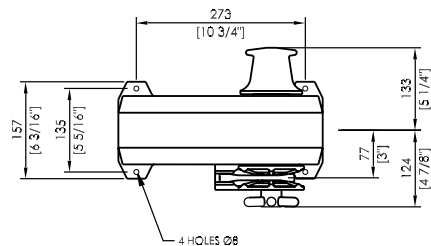
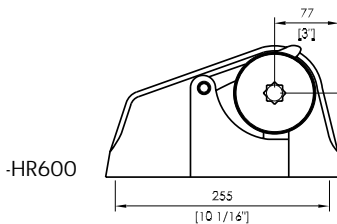
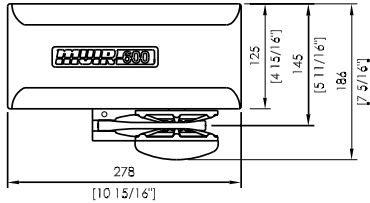
Features

- Fully automatic with manual freefall capability
- Rope chain combination gypsy for rope & chain combination or chain only
- Rope Chain Management System (RCMS)
- Dual direction motor in 12V DC (H600 only)
- Heavy duty dual direction motor in 12 & 24V DC (H700 only)
- Durable marine grade white gloss finish alloy housing
- Fully enclosed motor & gearbox
- Independent gypsy and capstan operation (H700 only)
- Luxury chromed marine grade bronze running gear
- Stainless steel drive shaft
- Cone clutch/brake
- Stainless steel mounting studs (H600 only)
- Shaft seal
- Clutch release handle
- Installation/Operation booklet



Options

- Traditional polished bronze finish on running gear
- Full range of accessories including chain, rope, anchors, anchor roller, chain stoppers, snubber kits & devil claws
- Electrical operating options & accessories
- Auto anchor



HR700