



# Compact 1200/2500

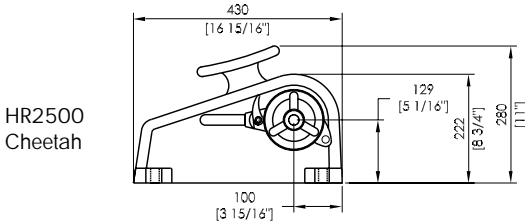
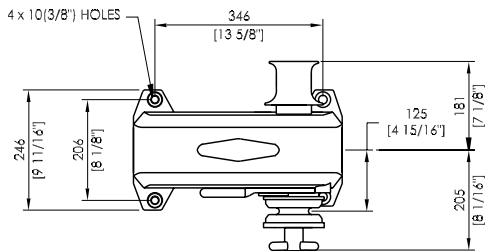
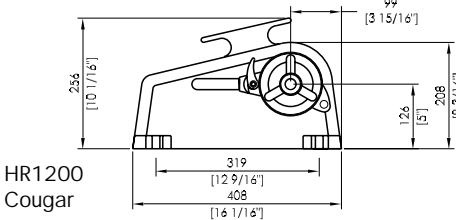
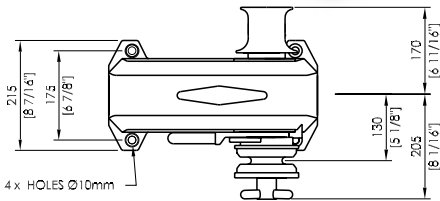


HR1200  
Cougar



HR2500  
Cheetah

Model	HR1200 Cougar	HR2500 Cheetah
VESSEL LENGTH	<b>9 - 13m</b> 29 - 42ft	<b>13 - 17m</b> 42 - 55ft
POWER SUPPLY (DC)	<b>12/24V</b>	<b>12/24V</b>
MOTOR (Watts)	1000	1200
HYDRAULIC PRESSURE	<b>N/A</b> N/A	<b>10MPa</b> 1450PSI
HYDRAULIC FLOW	<b>N/A</b> N/A	<b>20L/min</b> 5.5gal/min
MAX LOAD	<b>545kg</b> 1200lb	<b>1136kg</b> 2500lb
WORK LOAD	<b>125kg</b> 275lb	<b>284kg</b> 624lb
AMPS WORK LOAD	100/60	120/75
MAX LINE SPEED	<b>14.5m/min</b> 46ft/min	<b>15m/min</b> 48ft/min
CHAIN SIZE	<b>6 - 8 - 10mm</b> 1/4 - 1/2 - 3/8"	<b>8 - 10 - 13mm</b> 5/16 - 3/8 - 1/2"
ROPE SIZE	<b>12 - 14 - 16mm</b> 1/2 - 9/16 - 5/8"	<b>14 - 16 - 19mm</b> 9/16 - 5/8 - 3/4"
NET WEIGHT	<b>DC 25kg HYD 24kg</b> DC 55lb HYD 53lb	<b>DC 36kg HYD 35kg</b> DC 79lb HYD 77lb
MANUAL OPERATION	<b>MORS (std)</b>	<b>MORS (std)</b>



## Features

- Rope chain combination gypsy for rope & chain combination or chain only
- Manual Override System (MORS)
- Gypsy lock/pawl
- Cleat on housing
- Heavy duty dual direction motor in 12 & 24V DC, Hydraulic (HR2500 only)
- Durable marine grade white gloss finish alloy housing
- Fully enclosed motor & gearbox
- Independent gypsy and capstan operation
- Luxury chromed marine grade bronze running gear
- Stainless steel drive shaft
- Cone clutch/brake
- Shaft seal
- Clutch release handle
- Installation/Operation booklet



## Options

- 1200W motor (on HR1200)
- Twin gypsy, twin capstan
- Rope Chain Management System (RCMS)
- Housing without cleat
- Traditional polished bronze finish on running gear
- Full range of accessories including chain, rope, anchors, anchor roller, chain pipes, chain stoppers, snubber kits & devil claws
- Electric & hydraulic operating options & accessories
- Auto anchor