

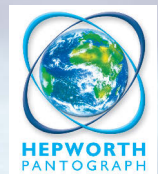


HEPWORTH MARINE
INTERNATIONAL

20Nm Medium Duty Window Wiper

FOR LOW SPEED VESSELS WITH SMALL WINDOWS

- A compact unit
- Pantograph and pendulum
- Arms with blades up to 24 ins. (610mm) are available
- Fixed arc or variable arc models
- 12 and 24 volt DC
- Two speeds
- Self parking facility
- Insulated earth return
- Operated by various controls including a rotary switch, toggle switch, rocker switch or a multi-speed / function control system



...WIPER SYSTEMS FOR ALL SIZES OF VESSEL





HEPworth MARINE
INTERNATIONAL

SPECIFICATIONS

Standard Details	2 Speed; Self Parking; Insulated Earth Return; 12v and 24v
Angles of Arc	Variable - at stated angles
Pantograph Units	40°, 50°, 60°, 70°, 80°, 90°
Pendulum Units	40°, 50°, 60°, 70°, 80°, 90°
Spindle Centres	Between Drive Liner & Idler = 50mm
Drive Liner	M20 - Brass Liner/12mm SS Spindle
Liner Overall Length	Bulkhead Thickness + 65mm
Idler Liner	M20 - Brass Liner/12mm SS Spindle
Bracket	No notation used for Bracket
Unit Weight	Allowing for the maximum arm and blade lengths; 3.5Kgs (7.7 lbs)

WIPER ARMS & BLADES

Pantograph Arms

P613	Medium Duty
Lengths	12" to 24" (310mm to 610mm) nom
Drive Head	12mm
Blade Clip	14mm

Pendulum Arms

F63	Medium Duty
Lengths	12" to 28" (310mm to 710mm) nom
Drive Head	12mm
Blade Clip	14mm

Blades

B160	Curved Blade, Stainless Steel
Lengths	12" to 24" (310mm to 610mm) nom

For use with arm types:

Pendulum	F63
Pantograph	P614



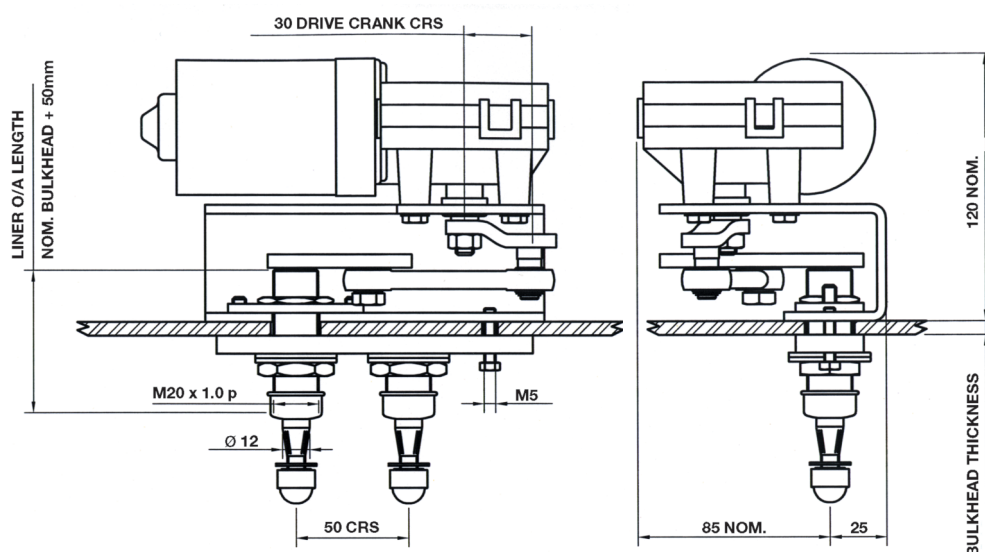
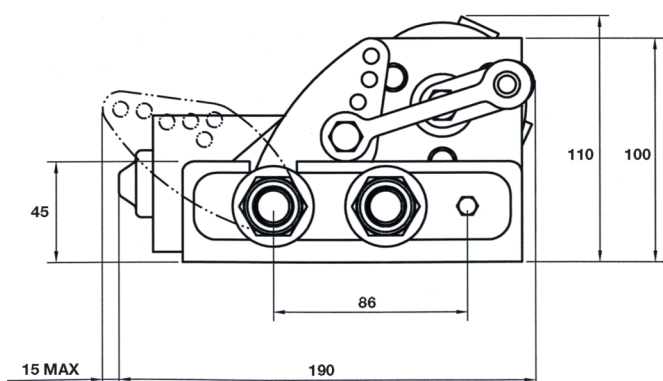
20Nm

**Medium Duty
Window Wiper**

FOR LOW SPEED VESSELS
WITH SMALL WINDOWS

Can be used in
combination with the
following Controllers:

- Carling Switch
- Cole Hersee Switch
- Wynn 8224 Bus Control
- Pine Controller
- Toggle Switch



*Measurements are for illustrative purposes only

www.northwestmarine.ca

**North West Marine
Distributors Ltd**

26940 26th Avenue
Aldergrove, BC V4W 4A4,
Canada

Phone: (604) 607-7901
Email: info@northwestmarine.ca