



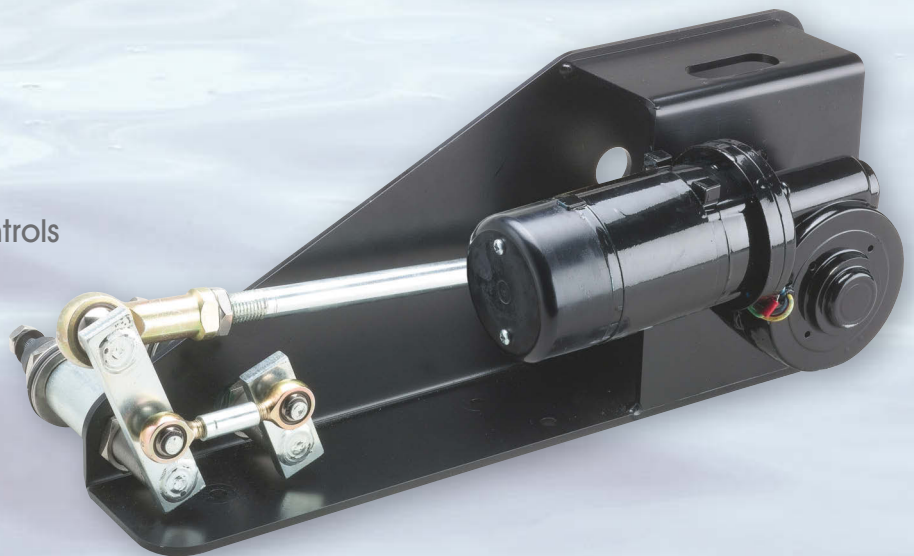
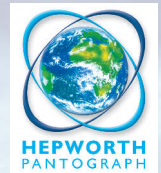
HEPWORTH MARINE
INTERNATIONAL

110Nm

Extra Heavy Duty Window Wiper

LOW VOLTAGE SYSTEMS IDEAL FOR AVERAGE TO HIGH SPEED VESSELS

- Pantograph and pendulum
- Arms with blades up to 78ins. (2000mm) available for average speed vessels
- Arms with blades up to 59ins. (1500mm) available for high speed vessels
- Fixed arc or variable arc models
- 24 volt DC
- Two speeds
- Self parking facility
- Insulated earth return
- Operated by various controls including a rotary switch, rocker switch or a multi-speed / function control system



...WIPER SYSTEMS FOR ALL SIZES OF VESSEL





HEPworth MARINE
INTERNATIONAL



SPECIFICATIONS

Standard Details	2 Speed; Self Parking; Insulated Earth Return; 24v
Angles of Arc - Fixed:	
Pantograph Units	45° to 90° (in 5° increments only)
Pendulum Units	45° to 115° (in 5° increments only)
Spindle Centres	Between Drive Liner & Idler = 60mm Pantograph Units only
Drive Liner	M26 - Brass Liner/16mm SS Spindle Pantograph & Pendulum Units
Idler Liner	M26 - Brass Liner/16mm SS Spindle Pantograph Units only
Liner Overall Length	Bulkhead Thickness + 55mm
Bracket	L - Left Hand Bracket; R - Right Hand Bracket;
Unit Weight	Allowing for the maximum arm and blade lengths; 9.2Kgs (20.0 lbs)

WIPER ARMS & BLADES

Pantograph Arms

P84	Heavy Duty
Lengths	24" to 72" (610mm to 1830mm) nom
Drive Head	16mm
Blade Clip	14mm & 20mm

Pendulum Arms

F80	Heavy Duty
Lengths	24" to 72" (610mm to 1830mm) nom
Drive Head	16mm
Blade Clip	14mm

F81	Heavy Duty
Lengths	24" to 72" (610mm to 1830mm) nom
Drive Head	16mm
Blade Clip	20mm

Blades

B160	Curved Blade, Stainless Steel
Lengths	12" to 28" (310mm to 710mm) nom

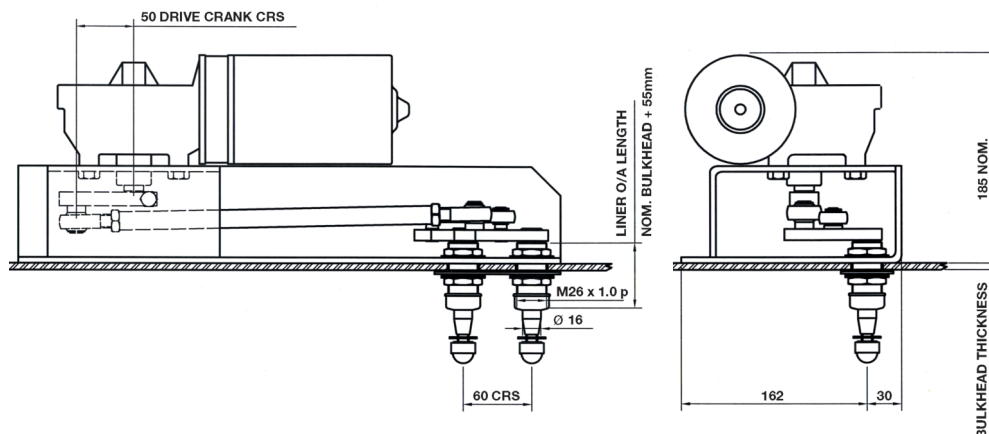
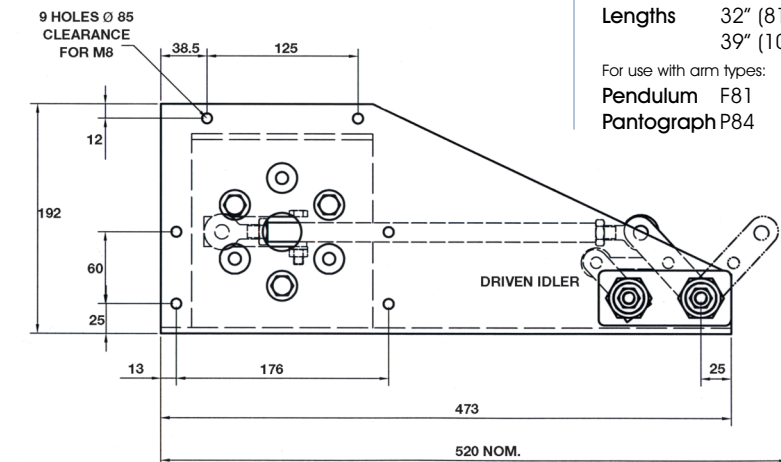
For use with arm types:

Pendulum	F80
Pantograph	P84

B160	Curved Blade, Stainless Steel
Lengths	32" (810mm), 36" (915mm), 39" (1000mm)

For use with arm types:

Pendulum	F81
Pantograph	P84



*Measurements are for illustrative purposes only

110Nm Extra Heavy Duty Window Wiper

HIGH VOLTAGE SYSTEMS
IDEAL FOR AVERAGE
TO HIGH SPEED VESSELS

Can be used in
combination with the
following Controllers:

- Carling Switch
- Cole Hersee Switch
- Wynn 8224 Bus Control
- Toggle Switch

**North West Marine
Distributors Ltd**

26940 26th Avenue
Aldergrove, BC V4W 4A4,
Canada

Phone: (604) 607-7901
Email: Info@northwestmarine.ca

www.northwestmarine.ca