

1 2 3 4 5 6 7 8 9 10 11 12

A

B

C

D

E

F

G

H

A

B

C

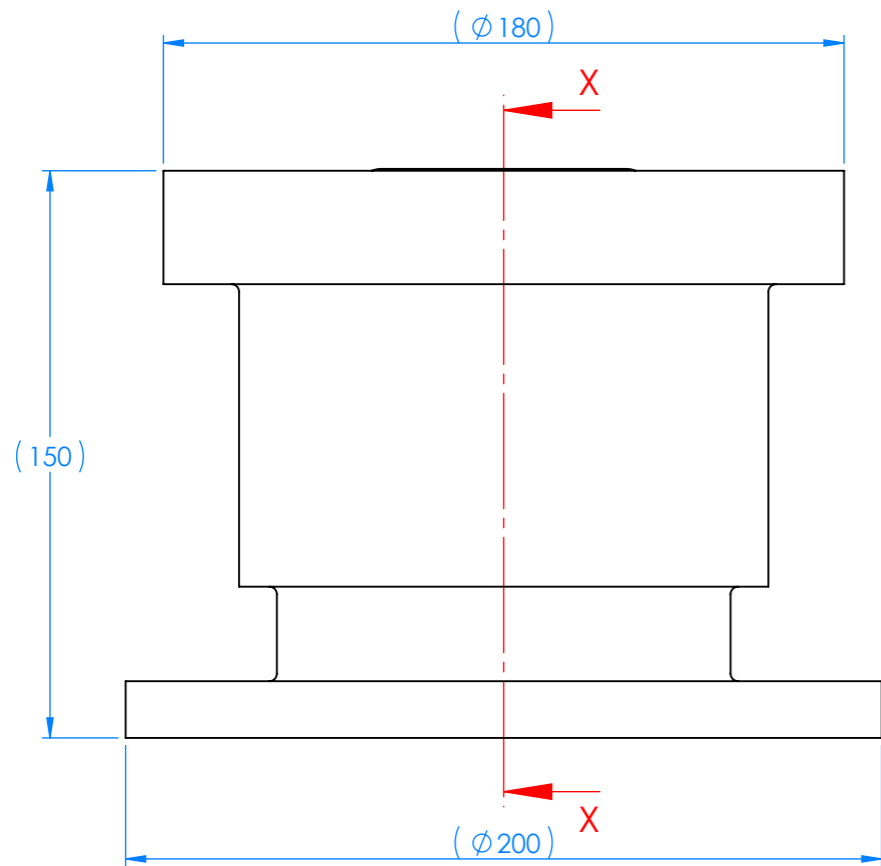
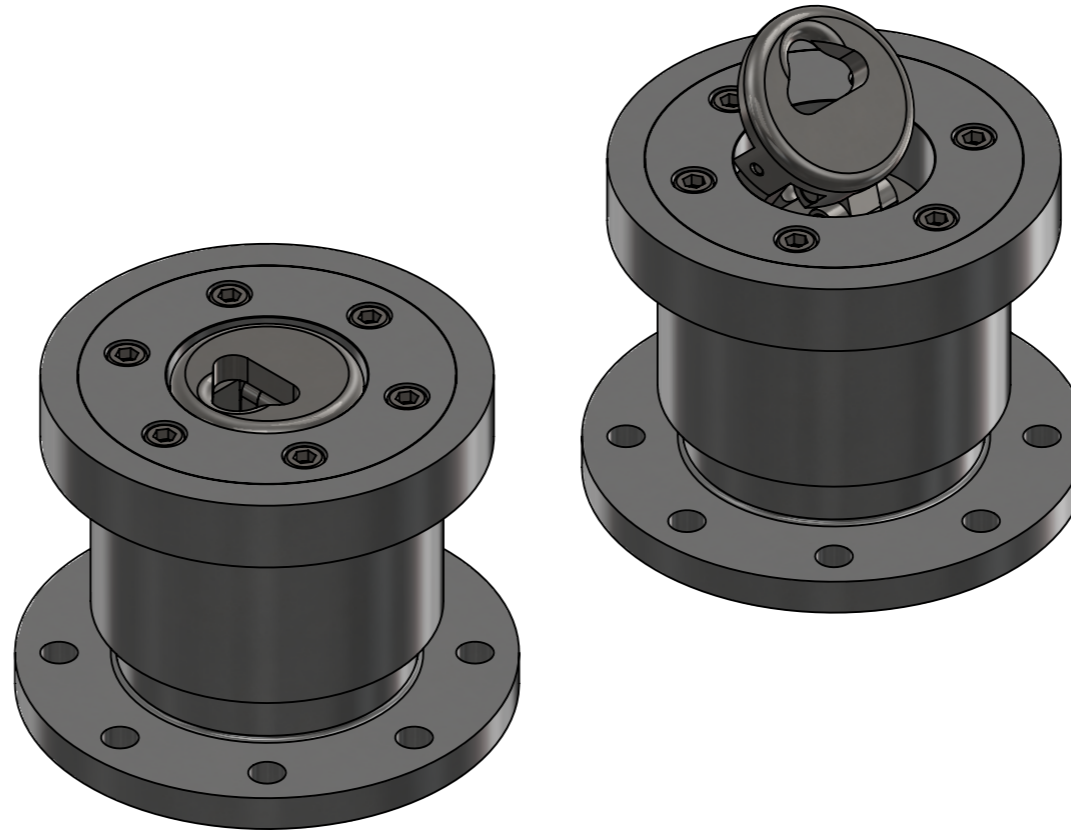
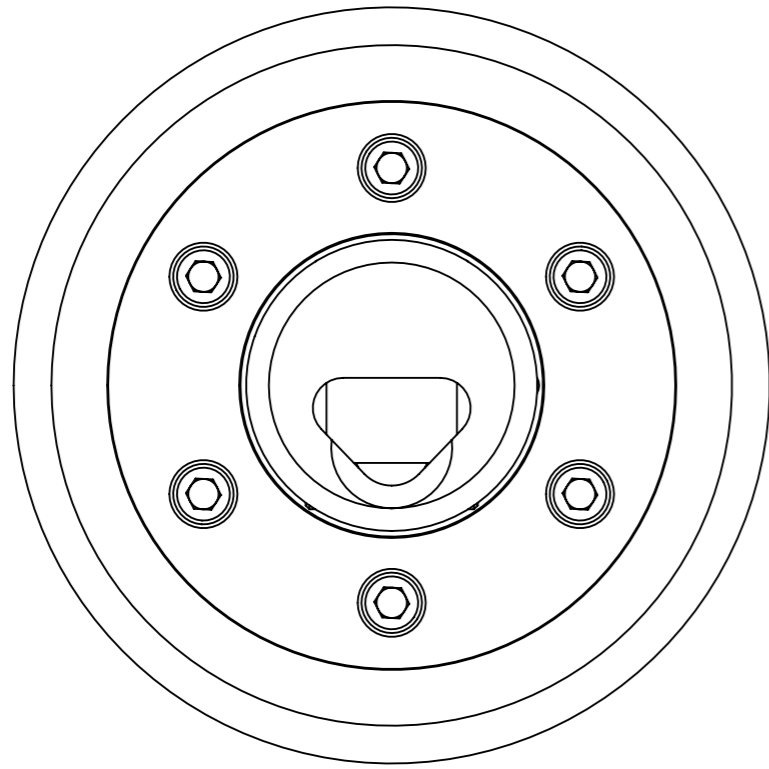
D

E

F

G

H



8516

CRITICAL DIMENSIONS MARKED THUS:   
 REFERENCE DETAILS MARKED THUS:

Matl. Part No. -   
 Matl. Type -   
 Matl. Size -   
 Finish -   
 Estimated Weight - 16.98 KG

All dimensions are in mm unless otherwise stated

WELD INSPECTION CLASS

Weld Performance Class  
 Standard EN 15085 -3 CP C2  
 Weld Inspection Class - Steel  
 BS EN ISO 5817 Class C  
 Weld Inspection Class - Aluminium  
 BS EN ISO 10042:2005

GENERAL TOLERANCES unless otherwise stated

Dimension - No decimal place ±1  
 Dimension - One decimal place ±0.5  
 Dimension - Two decimal places ±0.25  
 Angular Dimension ±1°  
 Weld Bead Length ±5  
 Surface Flatness (inc. weld) ±0.5



REV.	DESCRIPTION	DATE	APPROVED
		Date	Drawn by
		06/12/2016	M.J.I
		Approved by	E.W.
		Drawing Log No.	S21907
4-BAR HELICOPTER TIE-DOWN & CONCRETE ANCHOR ASSEMBLY			
-			
Size	Scale	Sheet	ISSUE No.
A3	1:2	1 of 1	

DO NOT SCALE IF IN DOUBT ASK

O/D - OUTSIDE DIM. I/D - INSIDE DIM.

OUTSIDE LOOKING IN

ALL PARTS FREE FROM WELD SPLATTER

3RD ANGLE

REMOVE ALL BURRS & SHARP EDGES

8516

A

B. Hepworth & Co. Ltd., (the 'Owner') holds intellectual property rights in the article shown. This drawing and the article may not be copied in any form without prior written permission of the owner. ©B. Hepworth & Co. Ltd., 2015

1 2 3 4 5 6 7 8 9 10 11 12